

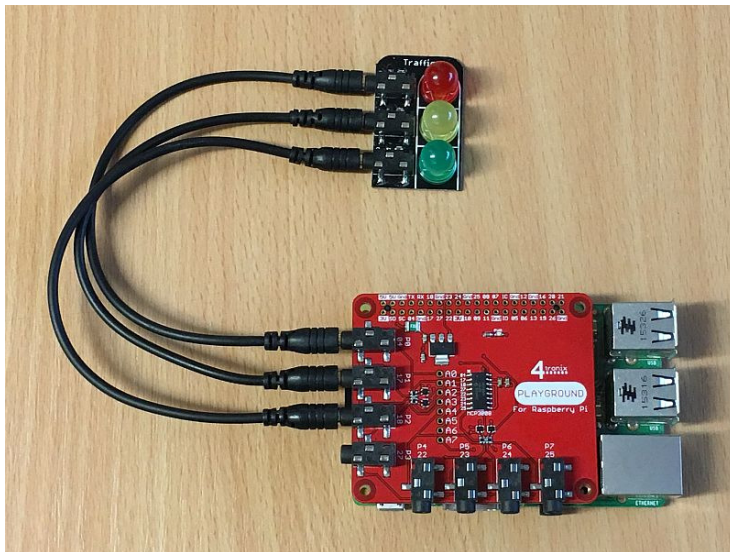
## Using the Traffic Light Gizmo with Playground for Raspberry Pi

### Requirements:

- Playground for Raspberry Pi
- Traffic Light Gizmo
- 3 x Connection cable

### Connections:

1. Plug 1 connection cable into Gizmo Red and Port 0 on Playground
2. Plug 1 connection cable into Gizmo Amber and Port 1 on Playground
3. Plug 1 connection cable into Gizmo Green and Port 2 on Playground



### Simple Software Demo:

This is a very simple Traffic Light sequence.

- We are using the TrafficLights class from gpio zero
- We use the port definitions from the playground module to select Port0, 1 and 2
- We then go through the (UK) traffic light sequence as usual
- Then we loop around. Press Ctrl-C to exit

```
from gpiozero import TrafficLights
from time import sleep
import playground as pg

lights = TrafficLights(pg.port0, pg.port1, pg.port2)

while True:
    lights.red.on()
    sleep(3)
    lights.amber.on()
    sleep(1)
    lights.red.off()
    lights.amber.off()
    lights.green.on()
    sleep(3)
    lights.green.off()
    lights.amber.on()
    sleep(1)
    lights.amber.off()
    lights.red.on()
```