

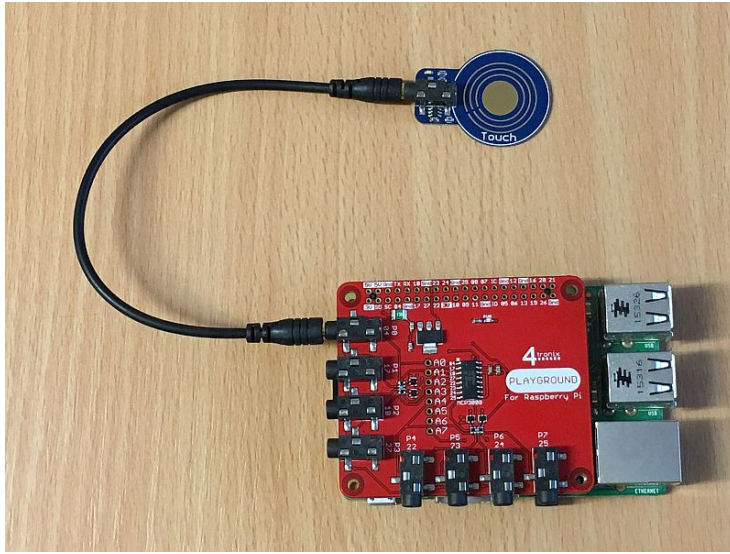
## Using the Touch Sensor Gizmo with Playground for Raspberry Pi

### Requirements:

- Playground for Raspberry Pi
- Touch Sensor Gizmo
- 1 x Connection cable

### Connections:

1. Plug connection cable into Gizmo and Port 0 on Playground



### Without Software:

Touch the round pad on the Gizmo

➔ LED on Gizmo will light

### Python Software Demo:

In fact this behaves exactly the same as the Button Gizmo as far as the software is concerned. So we can use exactly the same test software:

```
from gpiozero import Button
```

```
from time import sleep
```

```
import playground as pg
```

```
def buttonPress():
```

```
    print ("Button Pressed")
```

```
button = Button(pg.port0, pull_up=False)
```

```
button.when_pressed = buttonPress
```

```
while True:
```

```
    sleep(1)
```