

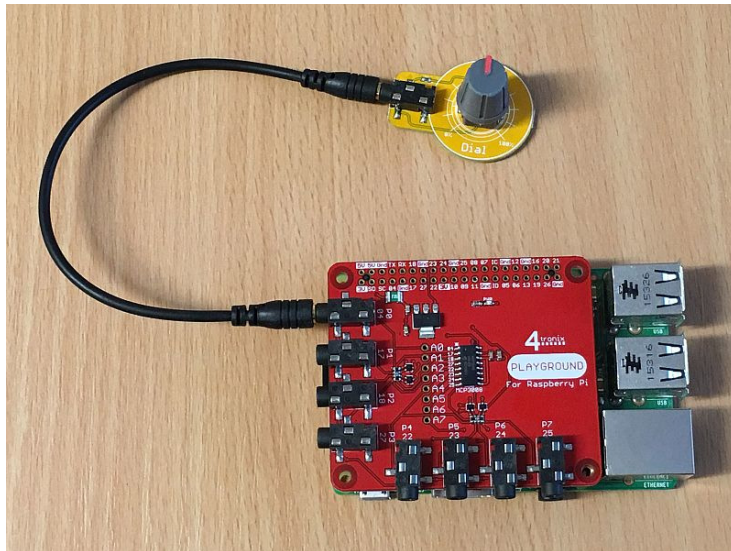
Using the Dial Gizmo with Playground for Raspberry Pi

Requirements:

- Playground for Raspberry Pi
- Dial Gizmo
- 1 x Connection cable

Connections:

1. Plug connection cable into Gizmo and Port 0 on Playground



Python Demo:

This program reads the value of the Dial potentiometer once per second and displays the voltage on the screen. It will vary from 0V to just under 3.3V (limited by the over-voltage protection circuitry on the Playground)

- We're using the MCP3008 class from gpiozero
- We use the defaults for the device connections and select channel 0 (ie. Port 0 on Playground)
- The number returned varies from 0.0 to 1.0, so we scale it and truncate to 2 decimal places

```
from gpiozero import MCP3008
```

```
from time import sleep
```

```
dial = MCP3008(channel = 0)
```

```
while True:
```

```
    print (int(330.0 * dial.value)/100.0)
```

```
    sleep (1)
```