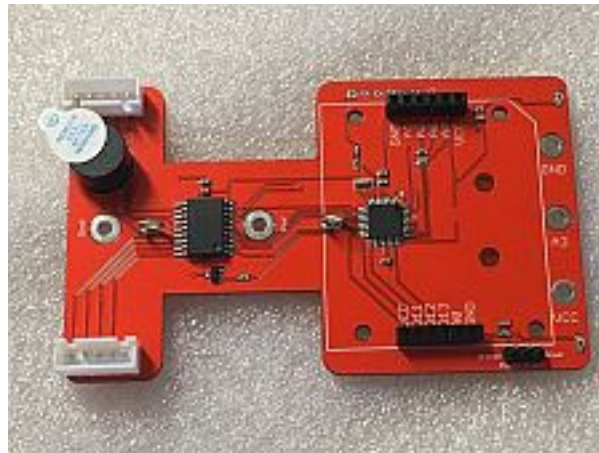


**Robot Chassis**



Finally, the first real part of the robot.

You will see two large cutouts near the rear of the chassis – these are where the motors will fit later. There are various holes which will be used to mount additional items to the basic chassis.

The chassis contains the processor, the motor driver and a round, black buzzer at the back.

At each of the two front corners there is a light sensor, so the robot will be able to detect light levels. What can these be used for do you think? Can you identify all the parts on this circuit board? Can you work out what all the holes are for?

